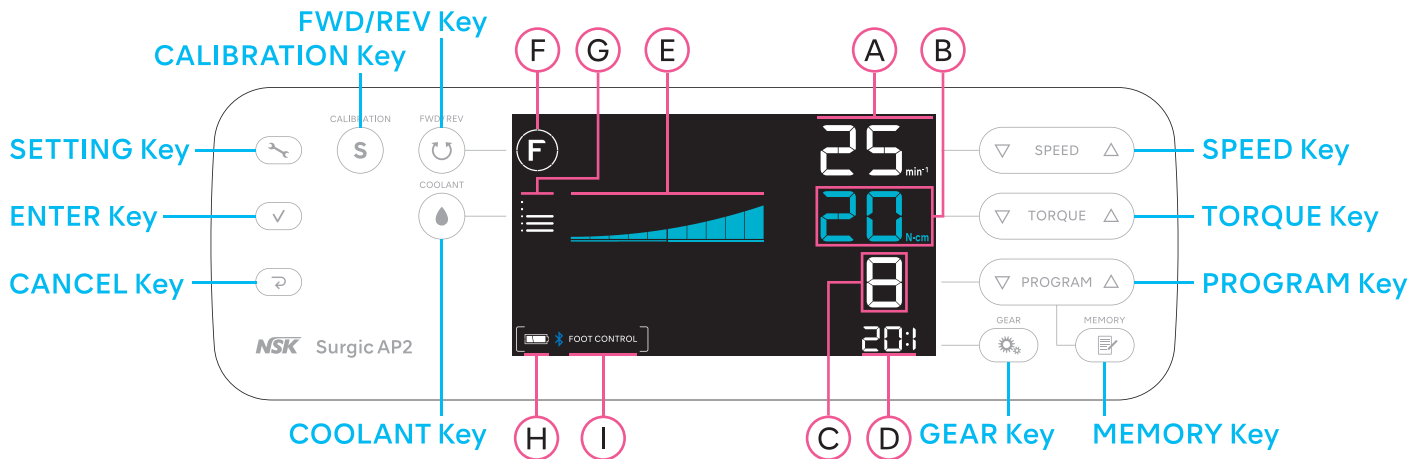
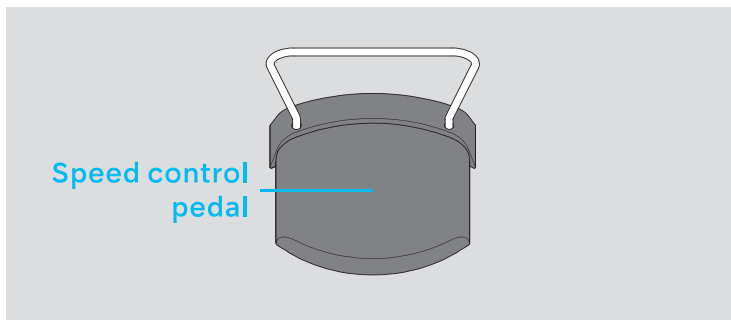


Control panel

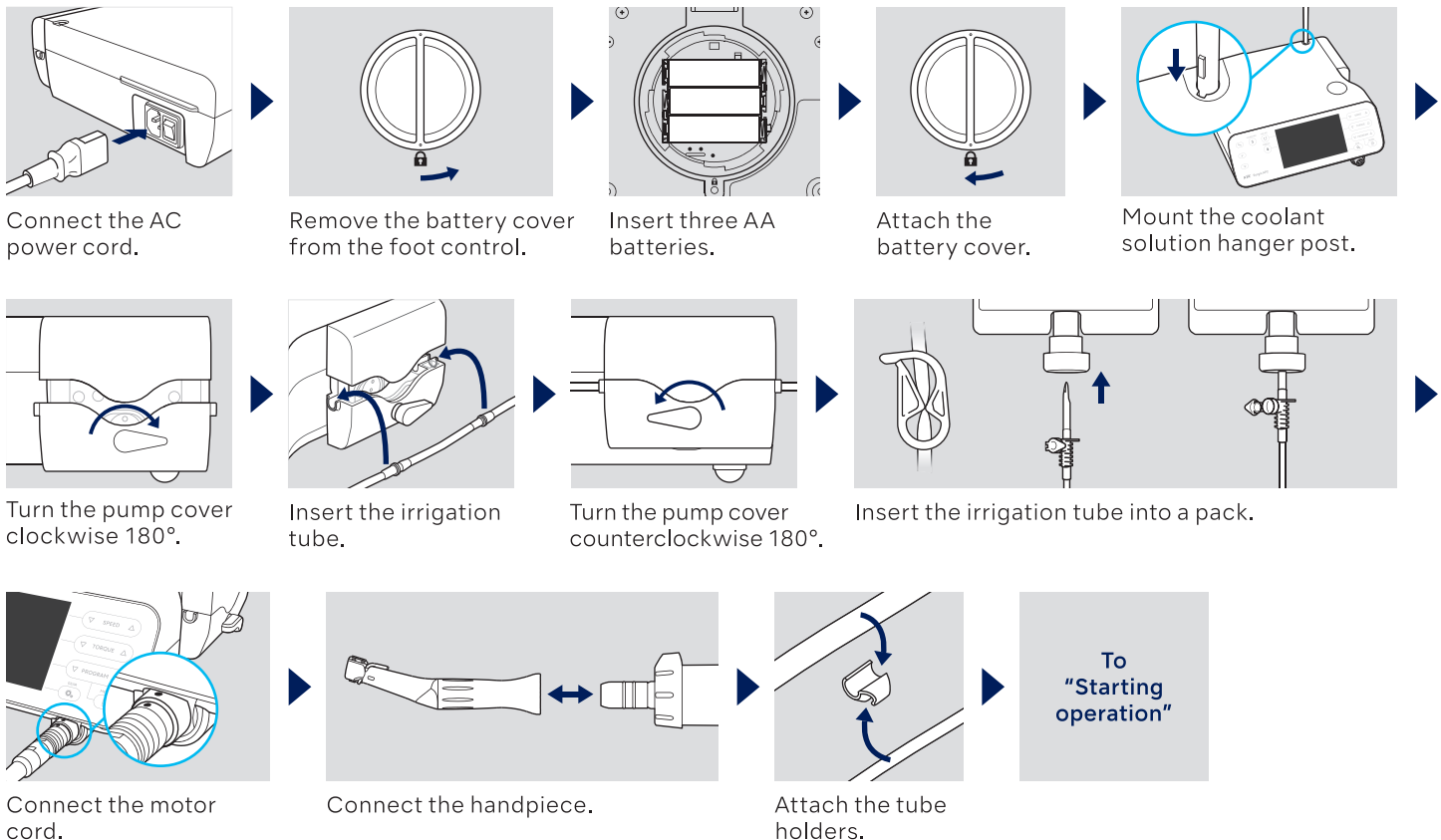


Foot control

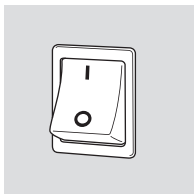


| | |
|---|---|
| A | Rotation speed |
| B | Torque |
| C | Program No. |
| D | Gear ratio |
| E | Current operating torque level |
| F | Rotation direction |
| G | Coolant solution flow level |
| H | Battery level of the foot control |
| I | Status of connection between the foot control |

Preparation for Use



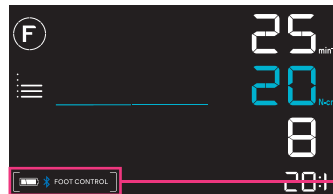
Starting operation



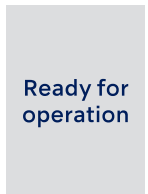
Turn on the power of Surgic AP2.



The above is displayed.



The normal screen is displayed. Make sure that the foot control is connected.



Ready for operation

Pairing with foot control

This operation is not necessary when using Surgic AP2 for the first time after purchase.

If the foot control is unpaired or when using newly purchased foot control, conduct the following operation. NOTICE: Pairing can be done within 10 minutes after inserting the battery.



At least 2 sec.

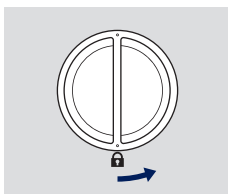
Press and hold the SETTING Key. "BLE SET" is displayed.



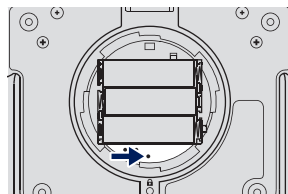
Press the ENTER Key.



The letters on the screen except "PAIRING" and "FC" flash on and off.



Remove the battery cover from the foot control.



Press the button shown above with a pointed tool until a beep sounds.



"OK" will appear. Pairing is done. Make sure that the device is connected.

Connected



Press the CANCEL Key to return to the normal screen.