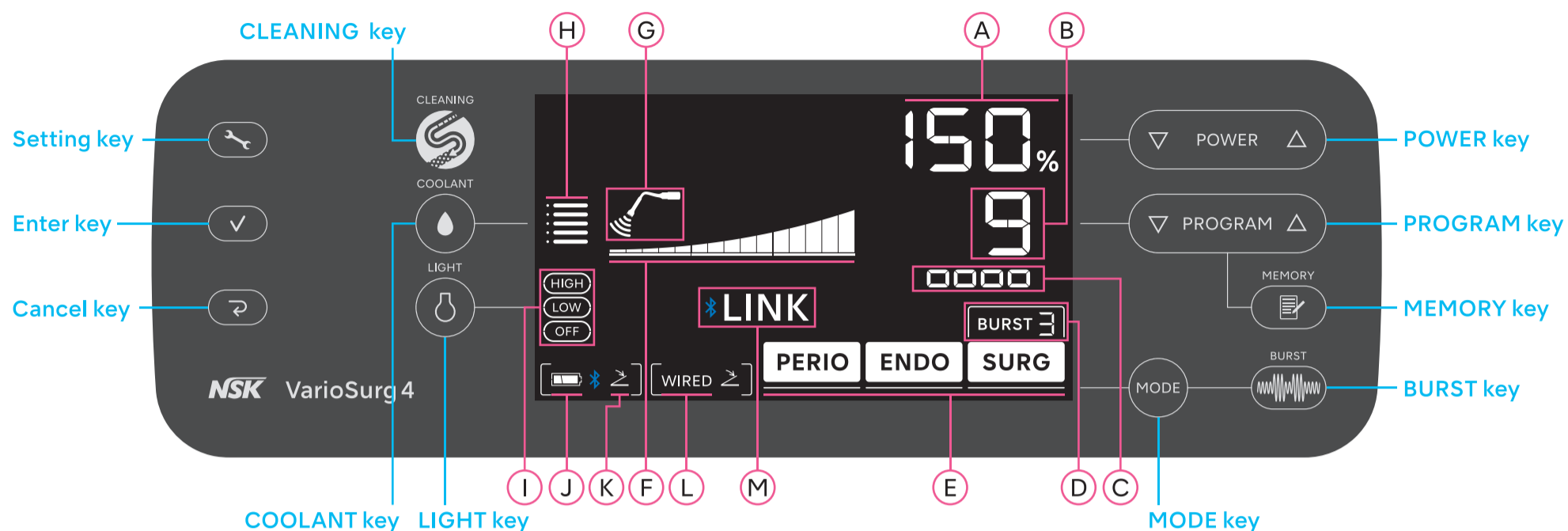
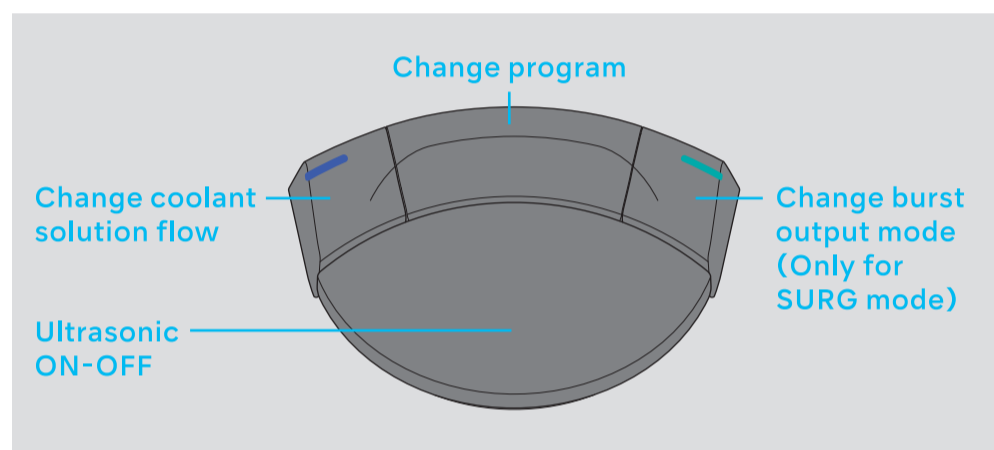


## Control panel

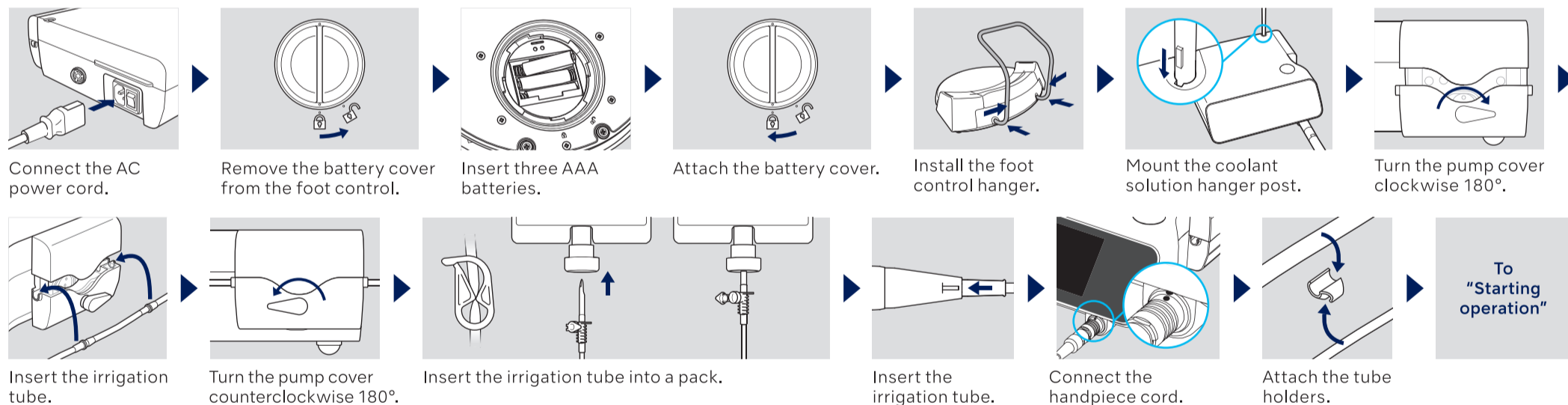


## Foot control

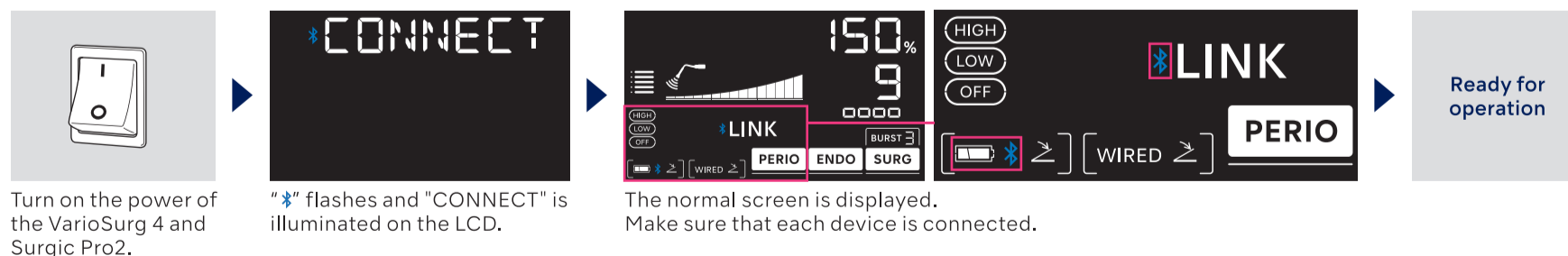


A	Power level	I	Light level
B	Program No.	J	Battery level of the wireless foot control
C	Status of wireless foot control calibration successful	K	Status of connection with the wireless foot control
D	Burst output level	L	Status of connection with the wired foot control
E	Mode	M	Status of connection with the Surgic Pro2
F	Power level is indicated by the number of indicator bars.		
G	Vibration		
H	Coolant solution flow level		

## Preparation for Use

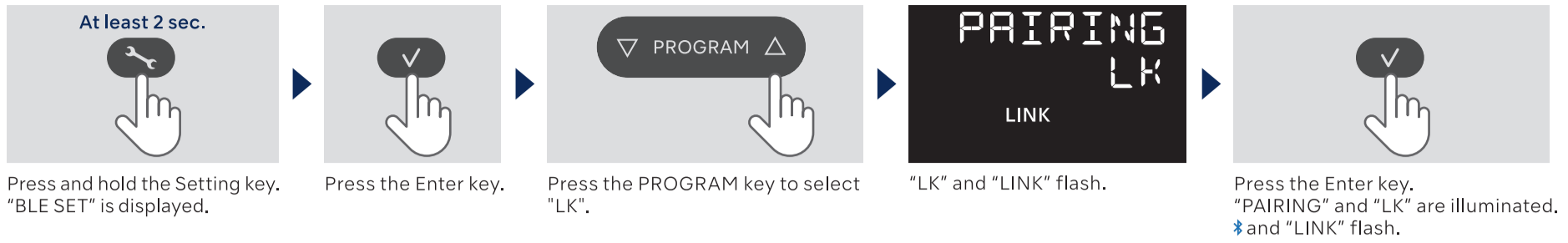


## Starting operation

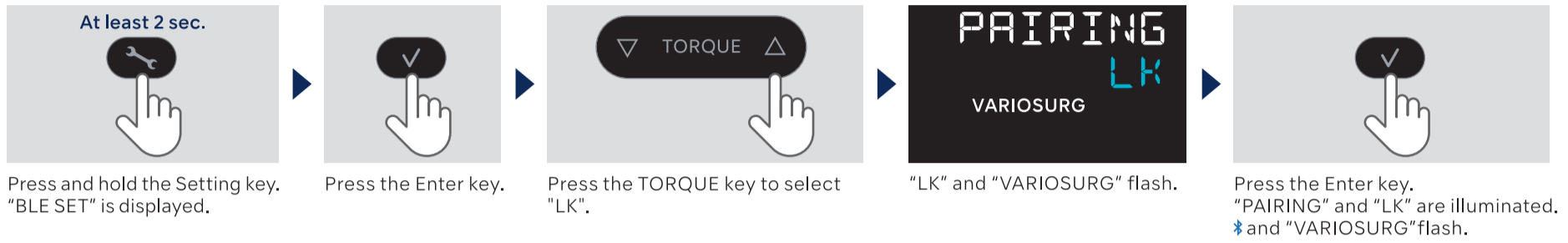


# Link with Surgic Pro2

## Step 1. VarioSurg 4

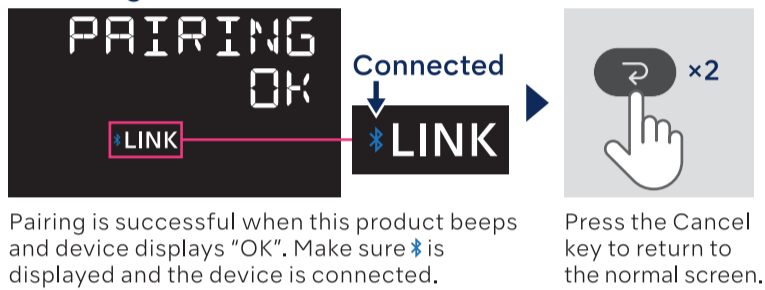


## Step 2. Surgic Pro2



## Step 3. VarioSurg 4 / Surgic Pro2

### VarioSurg 4



Pairing is successful when this product beeps and device displays "OK". Make sure is displayed and the device is connected.

### Surgic Pro2



Pairing is successful when this product beeps and device displays "OK". Make sure is displayed and the device is connected.

## VarioSurg Tips MODE & POWER GUIDE

Model	Mode	Max	Model	Mode	Max	Model	Mode	Max	Model	Mode	Max
H-SG1	S	150%	SG8A	S	80%	SG15D	S	50%	SCL5D	S	80%
H-SG8	S	150%	SG9	S	50%	SG16A	S	50%	E30RD-S	E	50%
H-SG8R	S	150%	SG10	S	50%	SG16B	S	50%	E30LD-S	E	50%
H-SG8L	S	150%	SG11	S	50%	SG68	S	80%	E31D-S	E	50%
SG58	S	80%	SG12	S	100%	M-RE2	S	80%	E32D-S	E	50%
SG1	S	80%	SG14R	S	80%	M-ST1	S	80%	G1-S	S	50%
SG1A	S	80%	SG14L	S	80%	M-OC1L	S	80%	P20-S	P	100%
SG2R	S	80%	SG17	S	80%	M-OC1R	S	80%	P25R-S	P	100%
SG2L	S	80%	SG18R	S	50%	SCL1	S	50%	P25L-S	P	100%
SG3	S	80%	SG18L	S	50%	SCL1D	S	80%	V-P10	P	100%
SG4	S	80%	SG19	S	80%	SCL2D	S	80%	V-P11R	P	100% *
SG5	S	80%	SG30	S	50%	SCL3	S	50%	V-P11L	P	100% *
SG6D	S	80%	SG15A	S	50%	SCL3D	S	80%	V-P12	P	100% *
SG7D	S	50%	SG15B	S	50%	SCL4D	S	80%			
SG8	S	80%	SG15C	S	50%	SCL5	S	50%			

\* Warning: To be used only with VarioSurg 3 and VarioSurg 4.